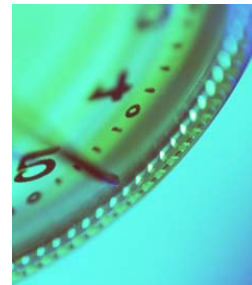
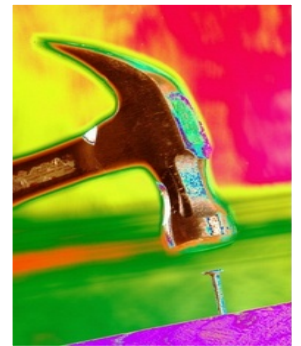


supply chain execution system

supply chain management solution (SPIDER-WIN)

Our customers
feel confidence.
They can trust
on deliveries
to accomplish
the forecast.
The propagation
of information and
the prediction
help them to
manage the
supply chain.



Control the situation of the supply chain in order to optimise processes, productivity and stocks.

SPIDER-WIN opens a new generation of Supply Chain Management Systems, enabling:

Propagation of information and prediction in a changing and uncertain environment!

- ✓ To predict stock shortages at an early date
- ✓ To propagate warnings across the whole supply chain
- ✓ To distribute new forecasts information to the affected suppliers immediately

Speed up Improvement!!

Global competence, zero defects, traceability, lead-time reduction, inventory optimisation, ...

It sounds familiar, doesn't it?

And this, does it sound familiar too?

Prediction of delivery delays from suppliers based on supplier stock status, propagation of information, key performance indicators and delivery times, ...

As it were not hard enough to manage the daily delivery plans...

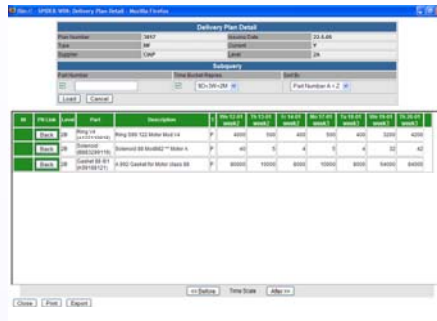
How could you find enough time to review all this information !!

Let us say that we could possibly help you.

Actually, it is not as difficult as it may seem.

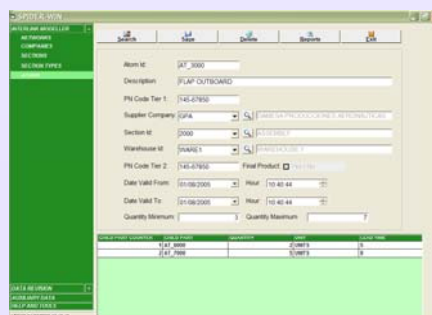
Here are some clues ...

- You need to establish a communication method in the whole supply chain *(We are sure that this is not a problem for you)*
- It is basic to define the systems of propagation and prediction, and know which parts are the most affected *(if you can't find enough time, we can help you)*
- It will be very helpful to have a communication and management tool that provides clear information regarding deliveries *(have you heard anything about SPIDER-WIN?)*
- It is very important to count on the support of a company who can help you with a methodological implementation, focused on the fulfilment of your targets *(this is what we are really experts on)*



information system for decision support

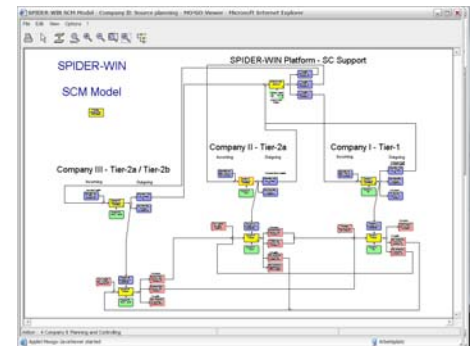
After many years of experience improving management and optimising productivity in industrial companies, SISTEPLANT, JOINET and IPK have developed a specific methodology for implementing SCM solutions, which summarises the modelling of your company's business rules in the value chain. The final result is a successful project, focused mainly on organisation features that will help you to improve the company management.



supply chain management

SPIDER-WIN allows an accurate and fast reporting and feedback among the customer and any level of suppliers, and enables a better decision-making in order to manage the supply chain.

SPIDER-WIN is a key element to improve the relationship customer-suppliers, providing the organisation with a very clear information almost in real time, in order to properly identify delivery problems and warn about the consequences.



user achievements

The improvements and savings named by our industrial partners, confirm a fast investment return. Among these, the most relevant improvements are:

- Improvement in customer service
- Lead time reduction
- Improvement in delivery dates
- Control simplification
- Paper use reduction (in compliance with the norm ISO - 14001)

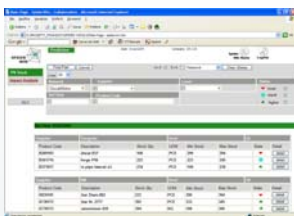


value chain management

Transform suppliers' stock and forecast data into 'active' management information, changing from an intuitive management model to another based on reliable feedback information.

| | | |
|--|---|---|
| Collaboration & Negotiation (CN) | Relation among a customer and its suppliers. Forecast and delivery management by means of a system that can be defined by the user who handles the purchase orders. | <ul style="list-style-type: none"> ▪ Definition of delivery types for the delivery plan ▪ Workflow of processes can be defined by the user |
| Propagation Intelligence (PI) | Transfer of information about delivery plans from the customer to the whole supply chain using the defined data in the 'Interlink Modeller' module, with each company having access to the data referring to its profile. | <ul style="list-style-type: none"> ▪ Propagation of daily delivery plans from the customer ▪ Propagation to the following levels of the successive parts in the value chain |
| Prediction Monitor (PM) | Prediction of future delays and shortages in the manufacturing plants (requirements concerning to next level suppliers, warnings, etc.). | <ul style="list-style-type: none"> ▪ Daily stock check of the suppliers regarding maximums and minimums ▪ Calculation and check of future inventories ▪ Relevant warnings following the calculations |
| Interlink Modeller (IM) | Relation among the reference codes for all the agents in the supply chain, as well as the bill of materials. | <ul style="list-style-type: none"> ▪ Supplier networks ▪ Sections and groups of machines ▪ Definition of the relation between parts, components and throughput time |
| Connection with plant information (CAPTOR-SP) | Feedback of data referring to stocks of the parts and changes on delivery plans. | <ul style="list-style-type: none"> ▪ Review of warehouse stock data ▪ Review of forecast data |

- adaptability
- standard implementations
- growing with modules
- organizational solution
- integration
- connectivity solutions
- multi-language
- users club



Many companies are already considering SPIDER-WIN to improve the connectivity:

- Automation
- Food industry and pharmacy
- Aeronautics
- Consumer goods
- Plastics
- Forging
- Paper Industry
- Foundry / Casting
- Furniture
- Capital goods



More information at:
Tel. 00 48 22 6608609
Fax 00 48 22 6608609
hm@wip.pw.edu.pl



More information at:
Tel. 00 39 051 4217511
Fax 00 39 051 4217550
Info@joinetspa.com
www.joinetspa.com

BOLOGNA (ITALY)



Fraunhofer Institut
Produktionsanlagen und
Konstruktionstechnik

More information at:
Tel. 00 49 30 39 006 248
Fax 00 49 30 393 25 03
markus.rabe@ipk.fraunhofer.de
www.ipk.fraunhofer.de/um



More information at:
Tel. 00 34 946 021 200
Fax 00 34 946 021 202
sistepplant@sistepplant.com
www.sistepplant.com

BARCELONA - BIZKAIA - MADRID

BRASIL - MEXICO - PORTUGAL - CZECH REPUBLIC

With the collaboration of:
DUCATI MOTOR, P.M., CIAP, BENTIVOGLI (ITALY)
FIBERTECNIC (SPAIN) and PZL (POLAND)